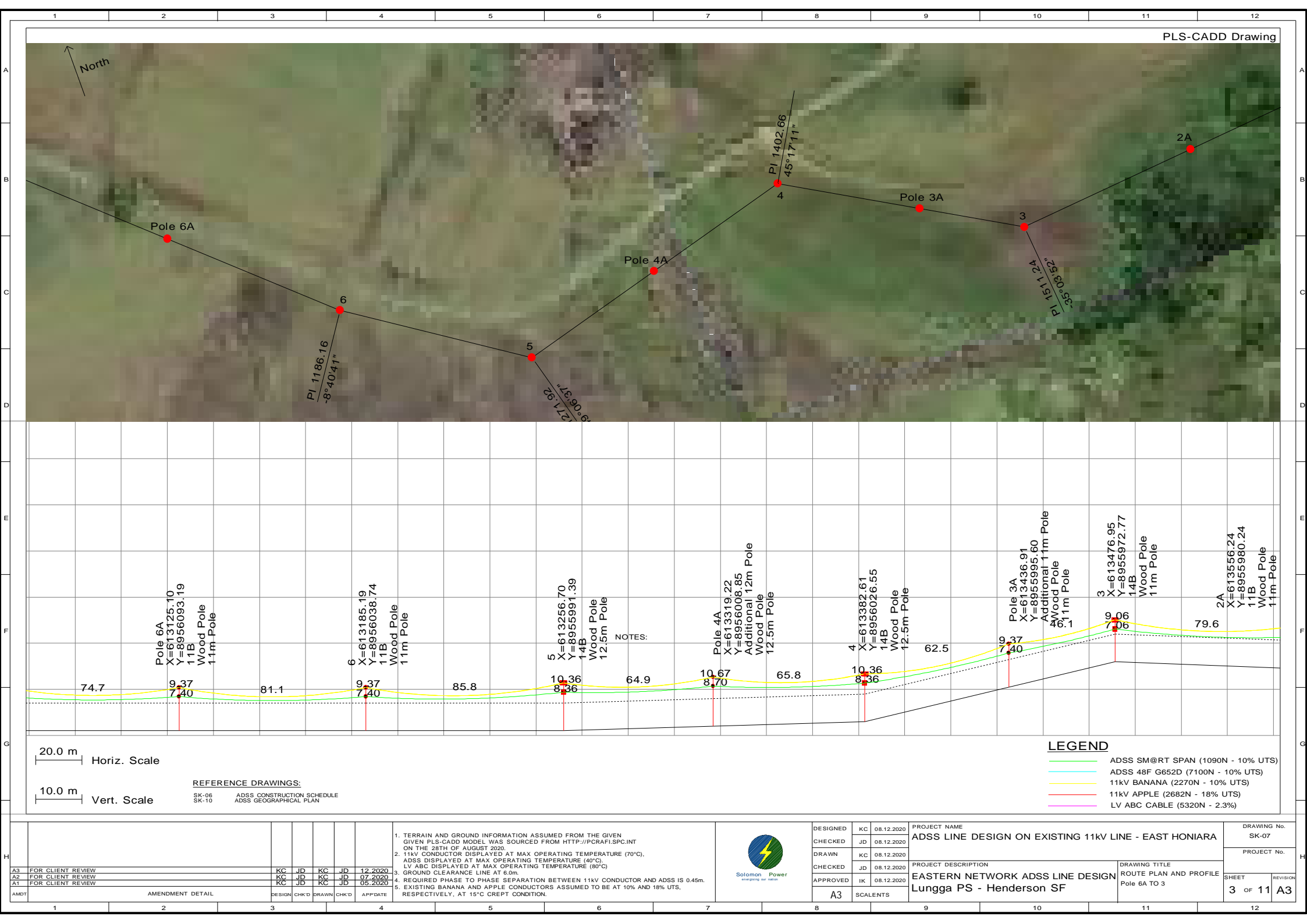


LEGEND

	ADSS SM@RT SPAN (1090N - 10% UTS)
	ADSS 48F G652D (7100N - 10% UTS)
	11kV BANANA (2270N - 10% UTS)
	11kV APPLE (2682N - 18% UTS)
	LV ABC CABLE (5320N - 2.3%)

DESIGNED	KC	08.12.2020	PROJECT NAME		DRAWING No.	
CHECKED	JD	08.12.2020	ADSS LINE DESIGN ON EXISTING 11kV LINE - EAST HONIARA		SK-07	
DRAWN	KC	08.12.2020			PROJECT No.	
CHECKED	JD	08.12.2020	PROJECT DESCRIPTION		DRAWING TITLE	
APPROVED	IK	08.12.2020	EASTERN NETWORK ADSS LINE DESIGN Lungga PS - Henderson SF		ROUTE PLAN AND PROFILE 4945 TO 14	
A3 SCALETS					SHEET 1 OF 11	REVISION A3

[illegible]





PLS-CADD Drawing

North

Pole 1A

2A

4924

4925

4926

PI 1678.41
48°32'17"

PI 1803.80
29°12'11"

PI 1958.82
-0°49'53" L4925

20.0 m Horiz. Scale

10.0 m Vert. Scale

REFERENCE DRAWINGS:

SK-06	ADSS CONSTRUCTION SCHEDULE
SK-10	ADSS GEOGRAPHICAL PLAN

LEGEND

- ADSS SM@RT SPAN (1090N - 10% UTS)
- ADSS 48F G652D (7100N - 10% UTS)
- 11kV BANANA (2270N - 10% UTS)
- 11kV APPLE (2682N - 18% UTS)
- LV ABC CABLE (5320N - 2.3%)

NOTES:

- TERRAIN AND GROUND INFORMATION ASSUMED FROM THE GIVEN GIVEN PLS-CADD MODEL WAS SOURCED FROM HTTP://PCRAFI.SPC.INT ON THE 28TH OF AUGUST 2020.
- 11kV CONDUCTOR DISPLAYED AT MAX OPERATING TEMPERATURE (70°C), ADSS DISPLAYED AT MAX OPERATING TEMPERATURE (40°C), LV ABC DISPLAYED AT MAX OPERATING TEMPERATURE (80°C).
- GROUND CLEARANCE LINE AT 6.0m.
- REQUIRED PHASE TO PHASE SEPARATION BETWEEN 11kV CONDUCTOR AND ADSS IS 0.45m.
- EXISTING BANANA AND APPLE CONDUCTORS ASSUMED TO BE AT 10% AND 18% UTS, RESPECTIVELY, AT 15°C CREPT CONDITION.

DESIGNED: KC 08.12.2020

CHECKED: JD 08.12.2020

DRAWN: KC 08.12.2020

CHECKED: JD 08.12.2020

APPROVED: IK 08.12.2020

A3 SCALENTS

PROJECT NAME: ADSS LINE DESIGN ON EXISTING 11kV LINE - EAST HONIARA

PROJECT DESCRIPTION: EASTERN NETWORK ADSS LINE DESIGN Lungga PS - Henderson SF

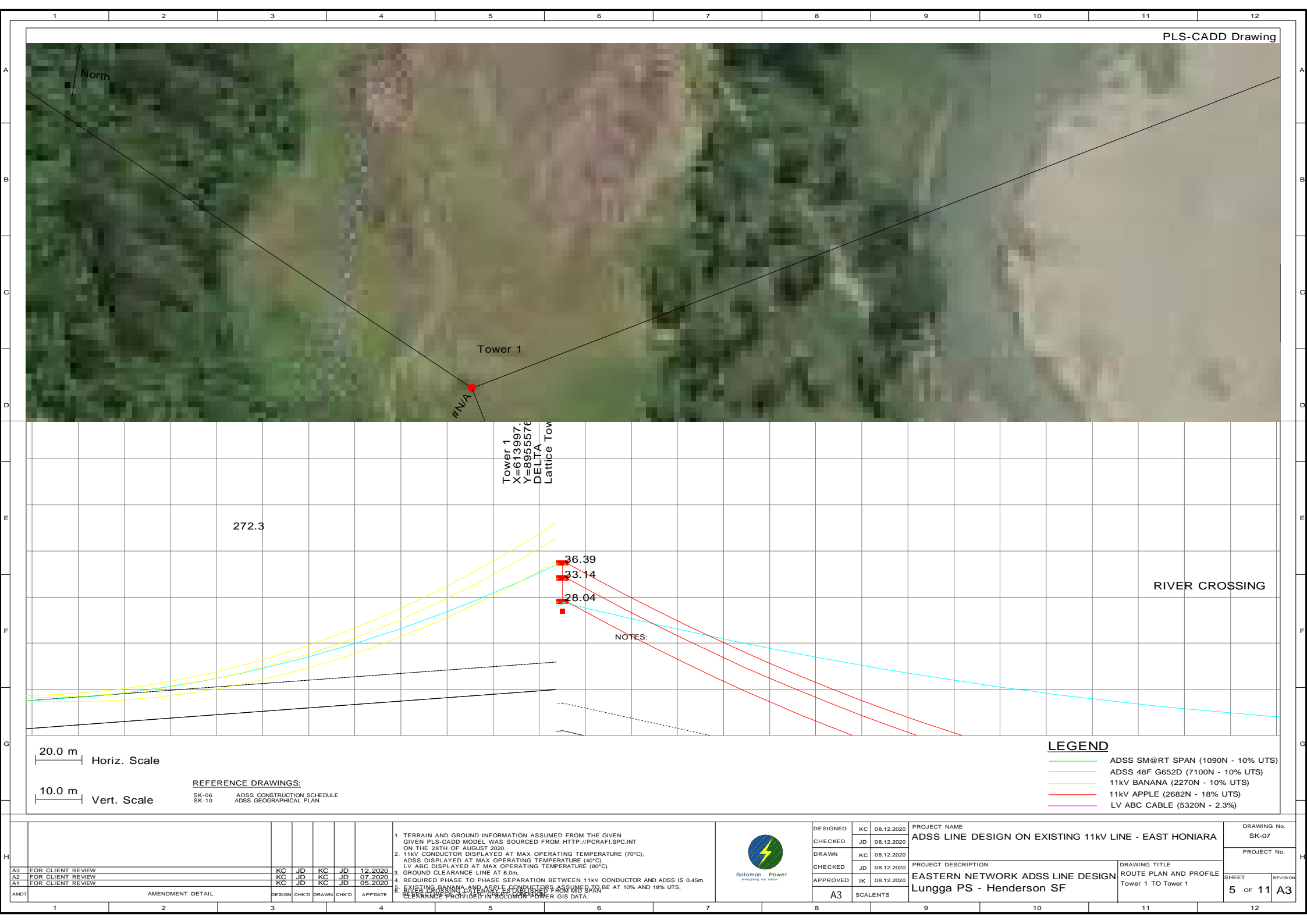
DRAWING TITLE: ROUTE PLAN AND PROFILE 2A TO 4924

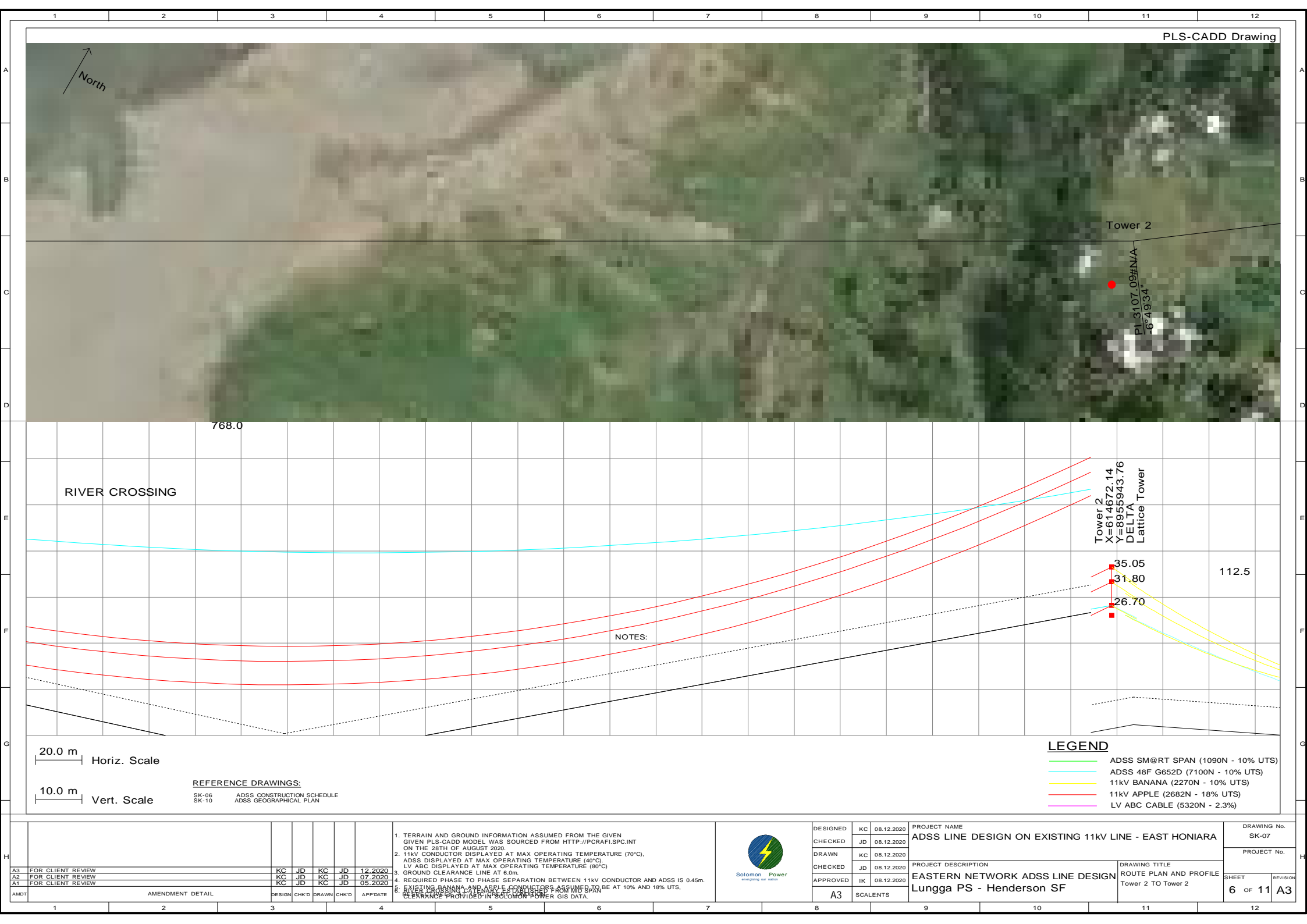
DRAWING No. SK-07

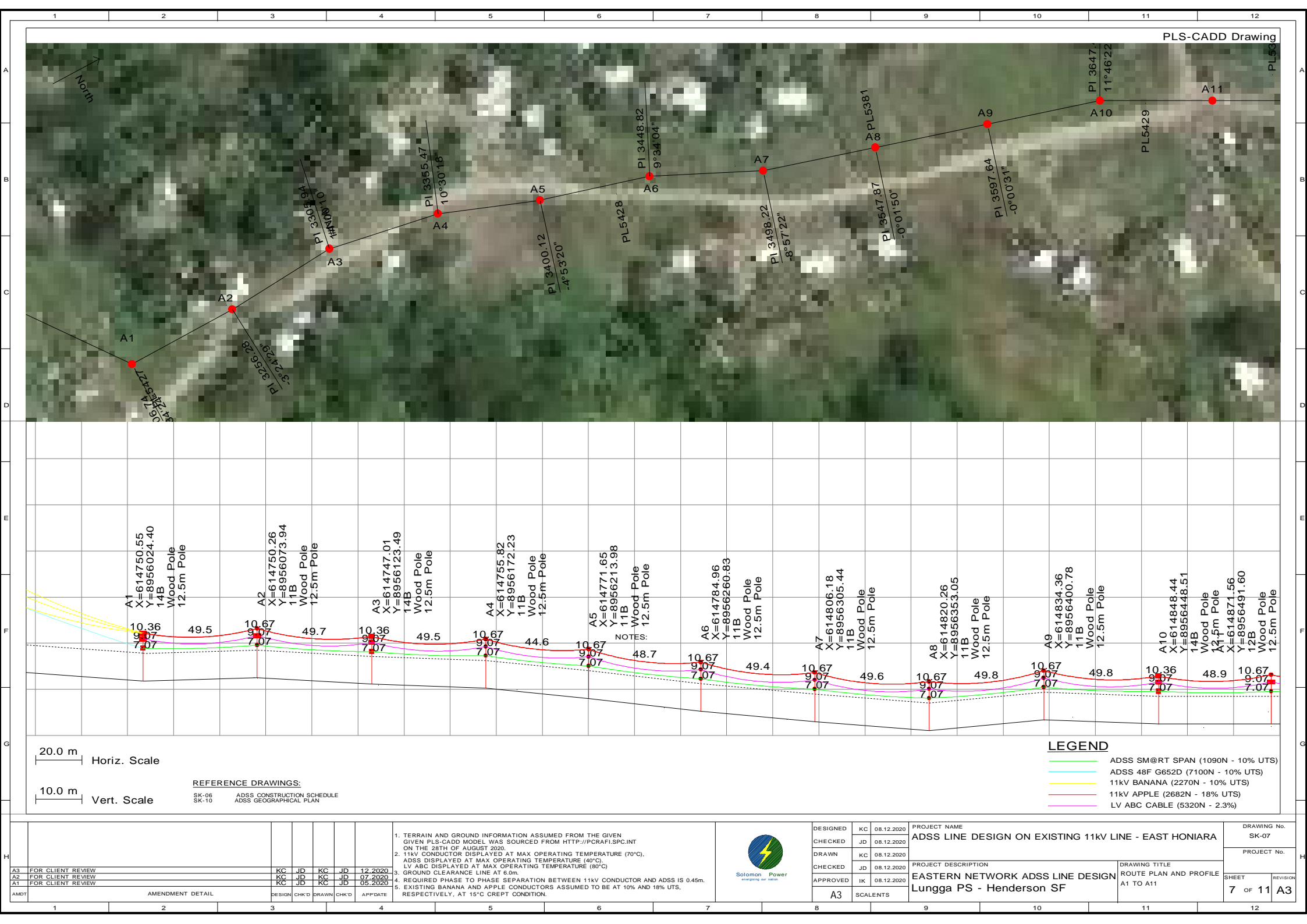
PROJECT No.

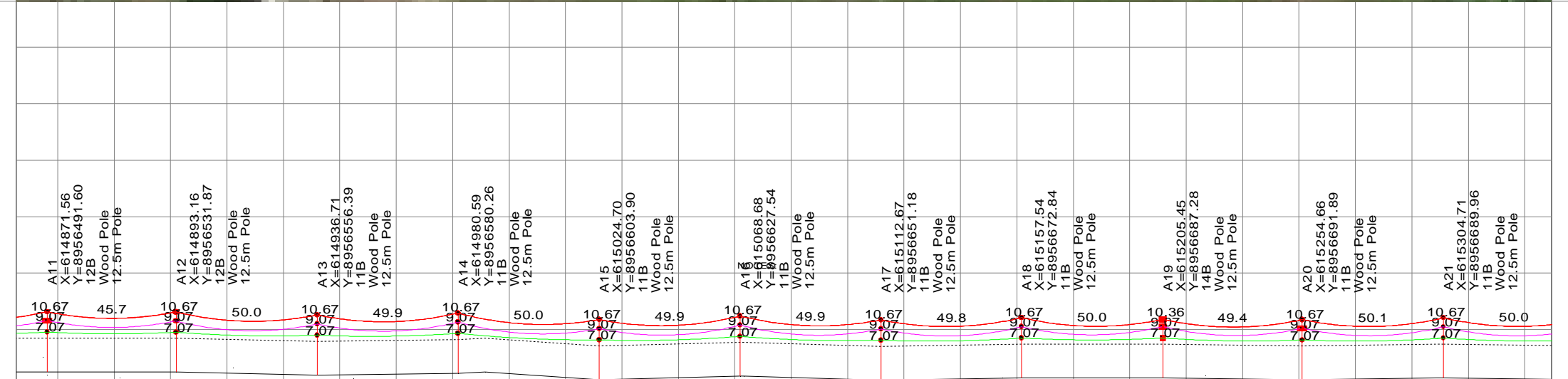
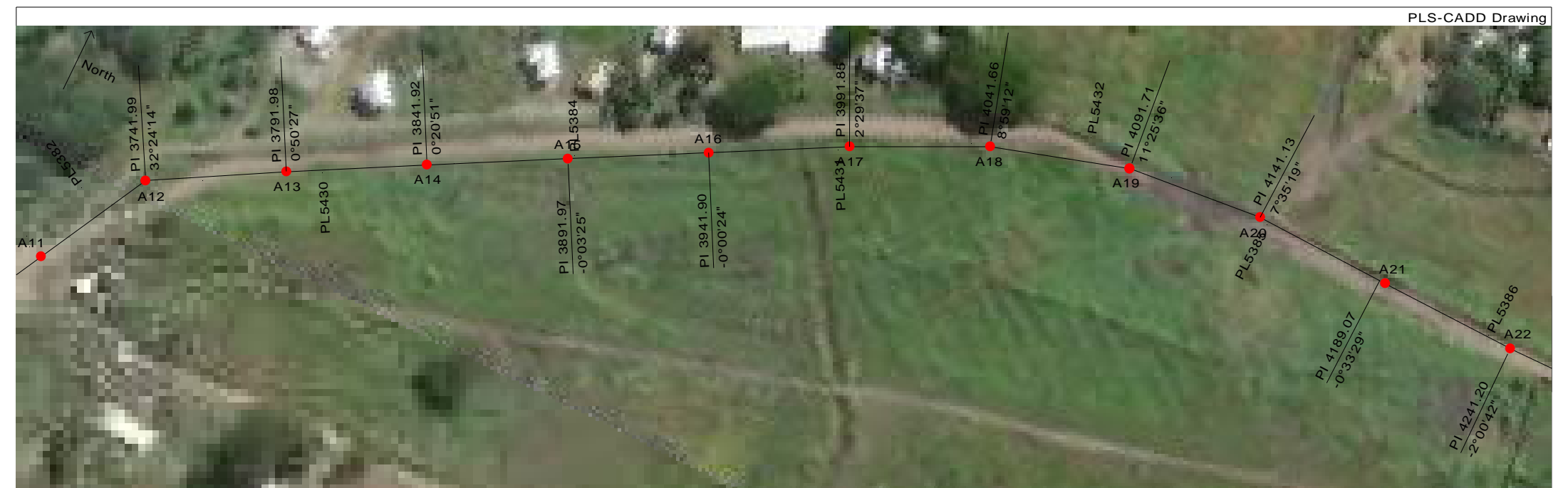
SHEET 4 OF 11

REVISION A3









10.0 m Vert. Scale

SK-06	ADSS CONSTRUCTION SCHEDULE
SK-10	ADSS GEOGRAPHICAL PLAN

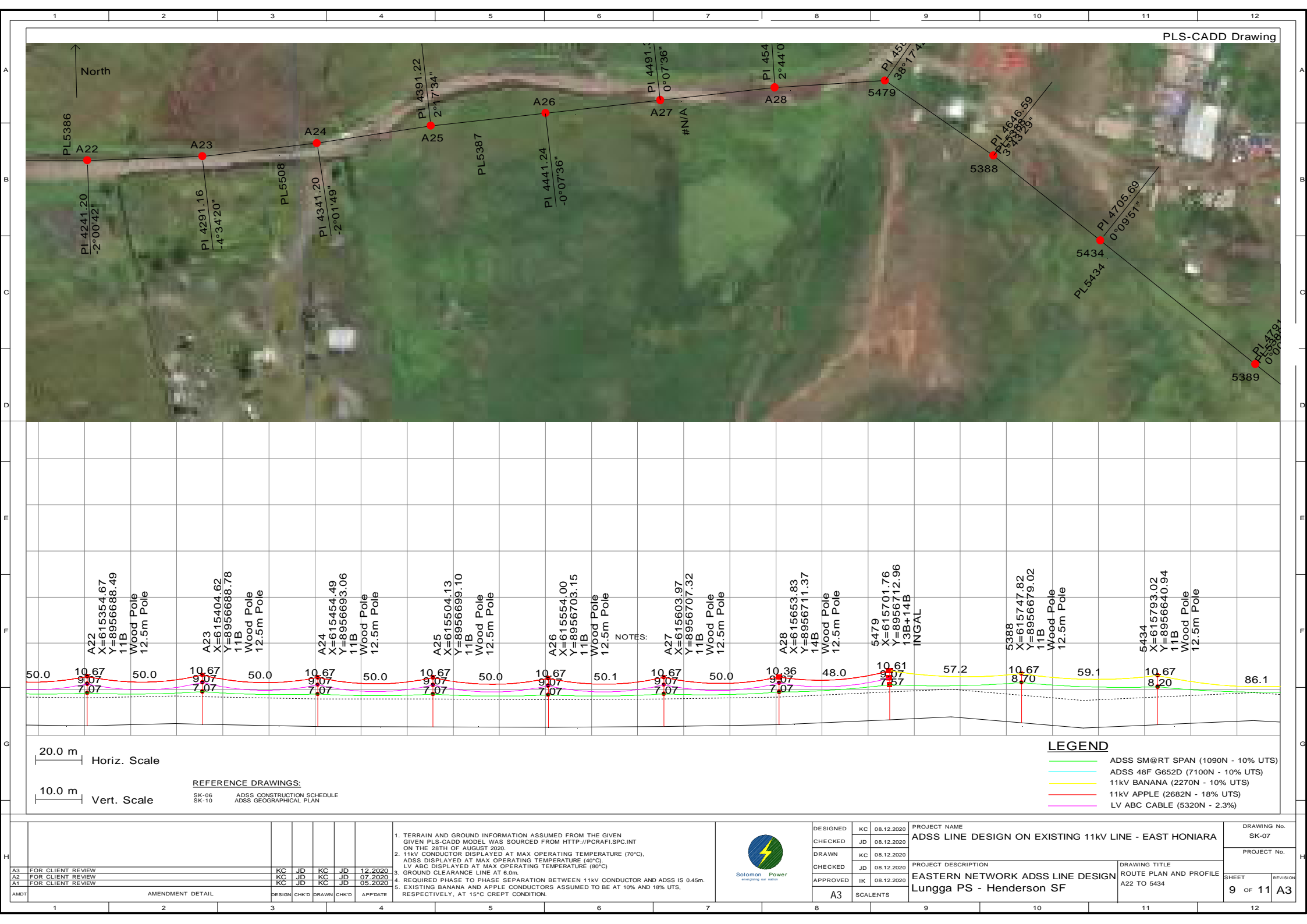
1. TERRAIN AND GROUND INFORMATION ASSUMED FROM THE GIVEN
GIVEN PLS-CADD MODEL WAS SOURCED FROM HTTP://PCRAFI.SP.CINT
ON THE 28TH OF AUGUST 2020.
2. 11KV CONDUCTOR DISPLAYED AT MAX OPERATING TEMPERATURE (70°C).
3. ADSS DISPLAYED AT MAX OPERATING TEMPERATURE (40°C).
4. LV ABC DISPLAYED AT MAX OPERATING TEMPERATURE (80°C).
5. GROUND CLEARANCE LINE AT 6.0m.
6. REQUIRED PHASE TO PHASE SEPARATION BETWEEN 11KV CONDUCTOR AND ADSS IS 0.45m.
7. EXISTING BARRAGE AND APPLIC CONDUCTORS ASSUMED TO BE AT 10% AND 18% UTS,
RESPECTIVELY, AT 15°C CREPT CONDITION.

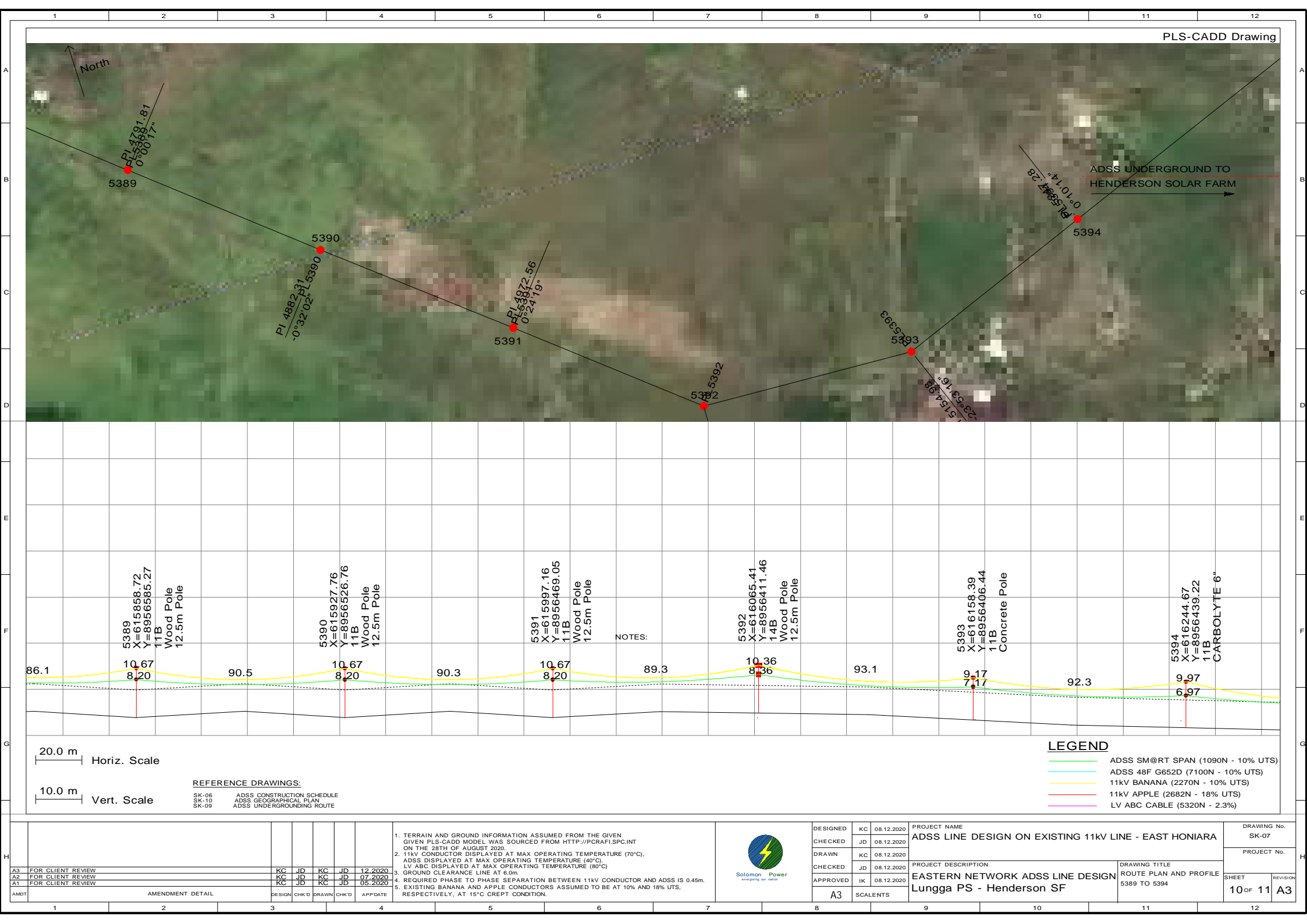


DESIGNED	KC	08.12.2022
CHECKED	JD	08.12.2022
DRAWN	KC	08.12.2022
CHECKED	JD	08.12.2022
APPROVED	IK	08.12.2022
A3	SCALENTS	

20	PROJECT NAME	
20	ADSS LINE DESIGN ON EXISTING 11KV LINE - EAST HONIARA	
20	PROJECT DESCRIPTION	DRAWING TITLE
20	EASTERN NETWORK ADSS LINE DESIGN	ROUTE PLAN AND PROFILE
20	Lunaga PS - Henderson SE	A11 to A21

SHEET	REVISION
8 OF 11	A3







NOTES

LEGEND

- ADSS SM@RT SPAN (1090N - 10% UTS)
- ADSS 48F G652D (7100N - 10% UTS)
- 11kV BANANA (2270N - 10% UTS)
- 11kV APPLE (2682N - 18% UTS)
- LV ABC CABLE (5320N - 2.3%)

20.0 m Horiz. Scale

10.0 m
Vert. Scale

REFERENCE DRAWINGS:

SK-06	ADSS CONSTRUCTION SCHEDULE
SK-10	ADSS GEOGRAPHICAL PLAN

DESIGNED	KC	08.12.2020	PROJECT NAME ADSS LINE DESIGN ON EXISTING 11kV LINE - EAST HONIARA			DRAWING No. SK-07	
CHECKED	JD	08.12.2020					
DRAWN	KC	08.12.2020					
CHECKED	JD	08.12.2020	PROJECT DESCRIPTION EASTERN NETWORK ADSS LINE DESIGN Lunga PS - Henderson SF			PROJECT No.	
APPROVED	IK	08.12.2020					
A3 SCALETS							
			DRAWING TITLE ROUTE PLAN AND PROFILE 5435 TO 5435			SHEET 11 OF 11	REVISION A3

[illegible]